

Installationguide for Printserver 32bit Version 2

1. Installation

First run Setup.exe. The Installationguide will guide you to perform the necessary action.

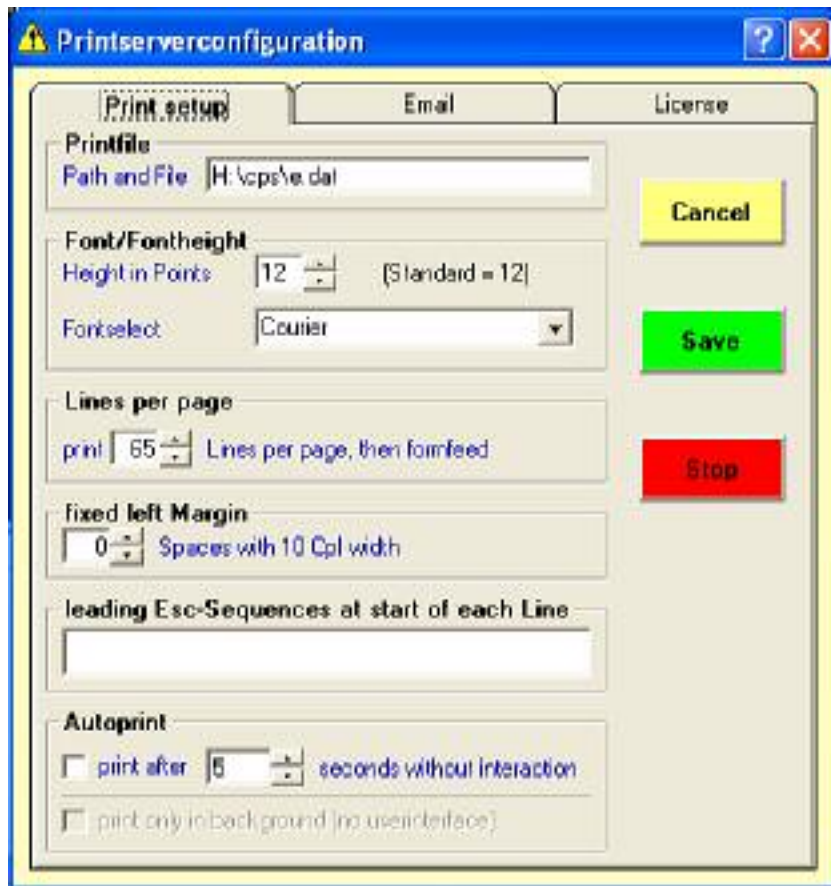
After the installation let the installer startup the application or launch the program manually.

During program execution you'll find the following symbol in the systray:



2. Setting up the program

Click on symbol launch the property page.



The first tab includes the basic application setup.

You must fillout the following parts:

a) Printfile

Declare here path- and filename of the output from the DOS-Application.
(Even the DOS-Application is able to print to a file or the port of the Generic Printerdriver, see „Printing to a file” document)

b) Font/Fontheight

Choice a fontname (all nonproprtional fonts, wich installed on your system will be shown).

And choice a fontheight in points (1 point equates 1/72 inch, 12 points equates 6 lines per inch).

c) Lines per page

After the count of lines the printserver executes a formfeed. If the pagelength is 12 inch there will be 72 lines per page (6 lines per inch) or pagelength is DIN A4 then choice 65 Lines.

d) Fixed left margin

Some programs need a fixed left margin. Set this parameter to the count of spaces with 10 CPI you needed.

e) Leading Esc-Sequences at the beginn of each line

Some Programs don't send any Esc-Sequences, but the printer must set to Pica or Condensed. Set here the nessasary controlsquences like ^W for 12 CPI or ^X for 15 CPI. The sequence will be added to each line of the document.

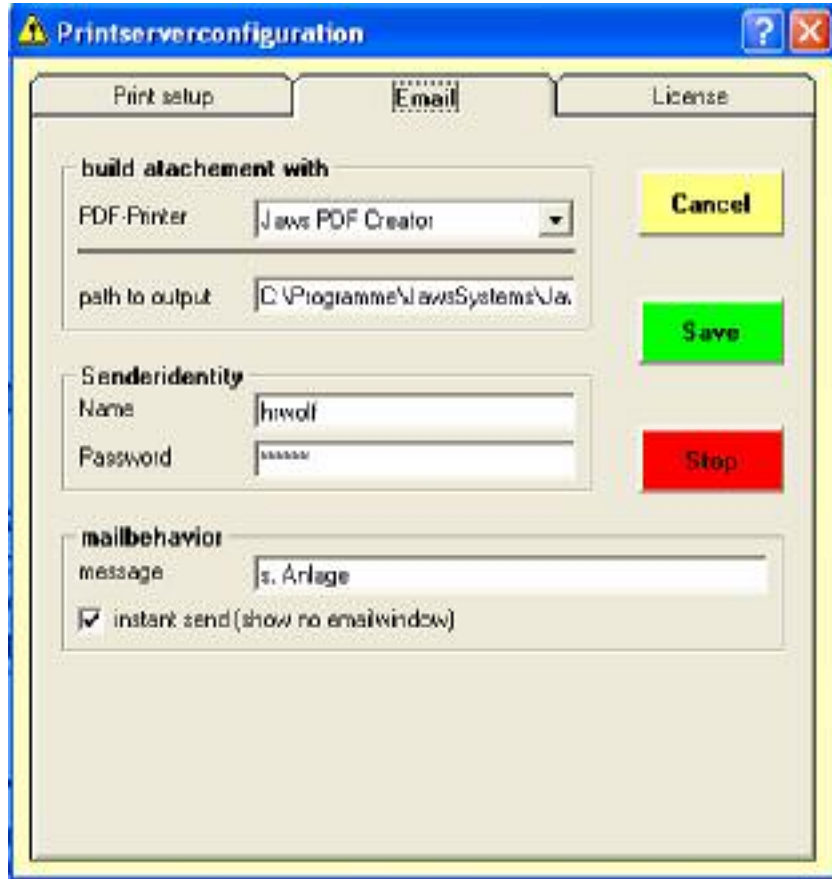
f) Autoprint

These Checkboxes manipulate the behavior of the printserver when something is to print.

Automatic print after n seconds start the Userinterface and begins after n seconds to print without any user interaction. If you change in this time any property automatic print is cancelled.

If you activate “print in background only” no Userinterface will be shown. After n seconds printing starts with the last properties.

Second Tab (email Properties)



To send a document via email it's necessary to generate an attachment. The best way is to use any pdf-printerdriver like Jaws-Pdf, pdf-mailer and so on.

The printserver needs a working Outlook-Express or MS Outlook.

In the first frame tell the program where the pdf-output is located and which pdf-printer you will use.

The second frame takes the identity of the sender.

The text box of the third frame will be the message of the email

If "instant send" is checked no mail window will be shown.

Third Tab (Lizenz)



In the process of installation a serialnumber will be generated.

Please get your license code via email. Don't forget the serialnumber, your companies address and the programmversion in mail.

The programm works without any license code with all function, but it generates the word „DEMO“ across each page. After entering a valid license code and saving this nag is lost.

Check „Start with windows“ if you want start the application automatically.

All properties will be set and printserver is ready to interact with your good old DOS-Application.

3. Additional Advice

If you need more than one instance of this application, create copies of the installfolder.

The license is common for all instances on one machine.

The printproperties will be saved and use separate.

If the output of the DOS-Application is redicted via net use Windows will wait 15 seconds for a timeout of any LPT-Port. You can modify this value with regedit in the key

HKEY_LOCAL_MACHINE\SYSTEM\CurrentControlSet\Control\WOW\LPT_timeout.

The minimum is a value of 1 (equates 1 second).

Esc-Sequenzen

Signpitch/Attribut	intern	Decimal	hexadecimal
Condensed on	^X	15 or 27,15	0F or 1B,0F
Condensed off	^x	18 or 27,18	12 or 1B,12
12 CPI on	^W	27,77	1B,4D
12 CPI off	^w	27,80	1B,50
5 CPI on	^D	27,87,1	1B,57,1
5 CPI off	^d	27,87,0	1B,57,0
Bold on	^B	27,69	1B,45
Bold off	^b	27,70	1B,46
Underlined on	^S	27,45,1	1B,2D,1
Underlined off	^s	27,45,0	1B,2D,0
Italic on	^I	27,52	1B,34
Italic off	^i	27,53	1B,35
Superscript on	^H	27,83,0	1B,53,0
Superscript off	^h	27,84	1B,54
Subscript on	^T	27,83,1	1B,53,1
Subscript off	^t	27,84	1B,54
Double Height on	^C	27,119,1	1B,77,1
Double Height off	^c	27,119,0	1B77,0
Red Font on	^R	27,114,1 to 27,114,7	1B,72,1 to 1B,72,7
Red Font off	^r	27,98 or 27,114,0	1B,62 or 1B,72,0
Formfeed	^N	12	0C